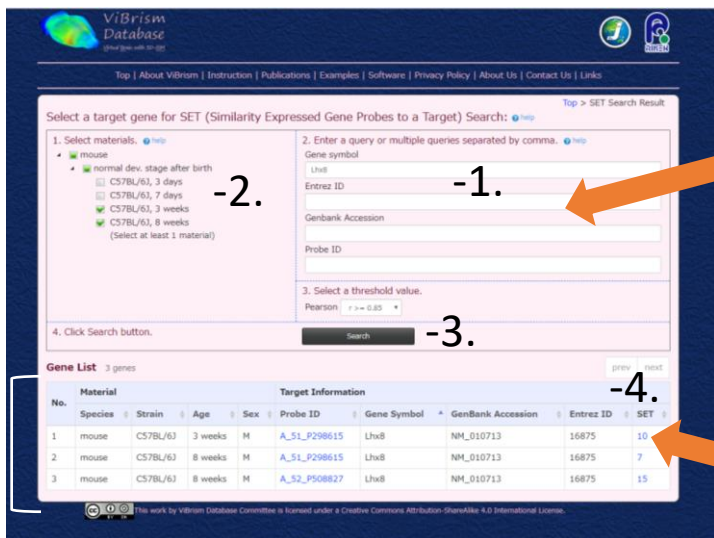


- I. Open a platform of “Expression similarity search and network viewer” (Fig. 1).
- II. Search genes of interest (target genes) by gene IDs and select SETs (Similarly Expressed genes of your Target gene, Fig. 2)



Click a icon to open the platform

Fig.1 ViBrism DB top-page platforms



For searching genes of interest
-1. type gene IDs
-2. select materials and
-3. click the “ search ” button.
Then you will see the search result*.

And
-4. click SET numbers (the number of genes included in the SET).
Then you will proceed to the page for SET network viewer.

Fig.2 an example view of selecting SETs

III. Click

- “Open SET network view” of the genes listed below* or for further analysis, click
- “Send the SET to stock” or
- “Download network link table” for saving network link tables (CSV or GML format).

Similarity Expressed Genes to a Target (SET)

species strain age sex
material mouse C57BL/6J 3 weeks M

Target Information: Probe ID: A_51_P298615, Gene Symbol: Lhx8, GenBank Accession: NM_010713, Entrez ID: 16875, Slice View: open / close

Expression Map

Correlation Coefficient: Pearson: $r \geq 0.85$

Probes found: 10

Gene List (10 genes):

No.	Probe ID	Symbol	GenBank Accession	Ent	Pearson Correlation Coefficient	Slice View
1	A_52_P33724	H2afj	NM_021459	16392	0.85660	open / close
2	A_55_P203	Rgs9	NM_011268	19739	0.85660	open / close
3	A_55_P19927	Rgs9	NM_011268	19739	0.85660	open / close
4	A_55_P19927	Rgs9	AK166518	19739	0.86860	open / close

Buttons: a. Open SET network view, b. Send to stock, c. Download network link table

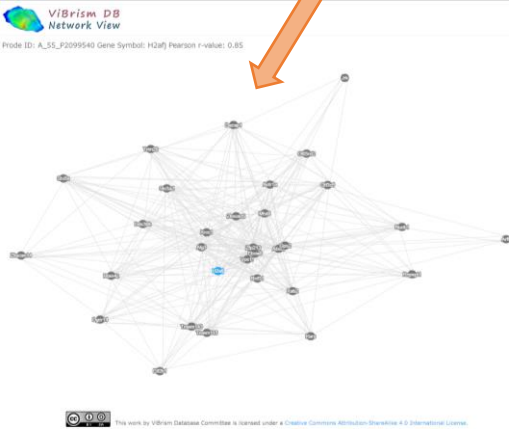
*The gene list of the SET is shown as a table.

b. Click “Send the SET to stock, then network selector will open.

a. Click “Open SET network view”, then see the gene network.

ViBrism DB Network Selector

No.	material	species	strain	age	sex	Target Information	Correlation Coefficient			
						Probe ID	Gene Symbol	GenBank Accession	Entrez ID	
1	mouse	C57BL/6J	3 weeks	M		A_55_P2099540	H2afj	NM_177688	232440	0.85
2	mouse	C57BL/6J	3 weeks	M		A_55_P2099526	H2afv	NM_029938	77605	0.85
3	mouse	C57BL/6J	3 weeks	M		A_51_P472901	Slic3a2	NM_008577	17254	0.85



- 1. check buttons to select SETs
- 2. check to make sum or intersect of the selected SETs
- 3. Click “Open SET network view, then see the results.

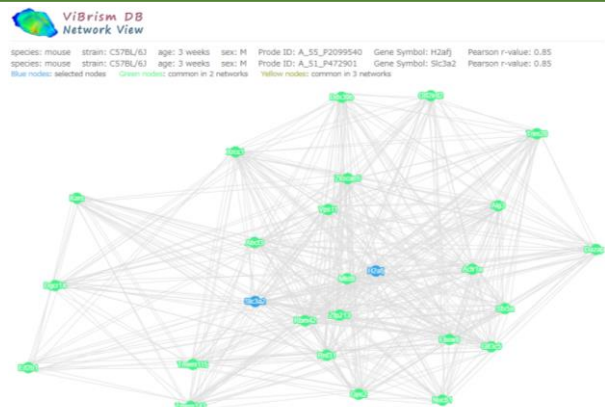


Fig.3 Example views of SET network Viewer